

Landscape Systems Management 1.5 Release

May 2010

Ken Drachnik

Daniel Dolinov

Canonical

Linux Systems Management

- **The time and cost to manually manage the Linux environment grows exponentially as the number of Linux deployments increases**
- **Landscape can help you reduce management costs, unnecessary downtime and better leverage your Linux environment**

Linux Systems Management

- **Common Needs**

- Increase productivity and decrease errors to reduce downtime and save money
- This is accomplished by
 - Automation of common tasks and workflows
 - Centralized management
- **With system management, we mean the following:**
 - **Updates Management:** Deploy security patches and other updates.
 - **Provisioning:** Automated installation of new or existing systems.
 - **Monitoring:** Track the ongoing performance of systems

Landscape

- A platform of services that automate workflows to maximize availability and performance



Management

- ✓ Update similar systems as one
- ✓ Scales to thousands of systems
- ✓ Physical, virtual & Cloud instances



Monitoring

- ✓ System performance
- ✓ Custom graphs
- ✓ Uptime
- ✓ Auditing of packages and changes

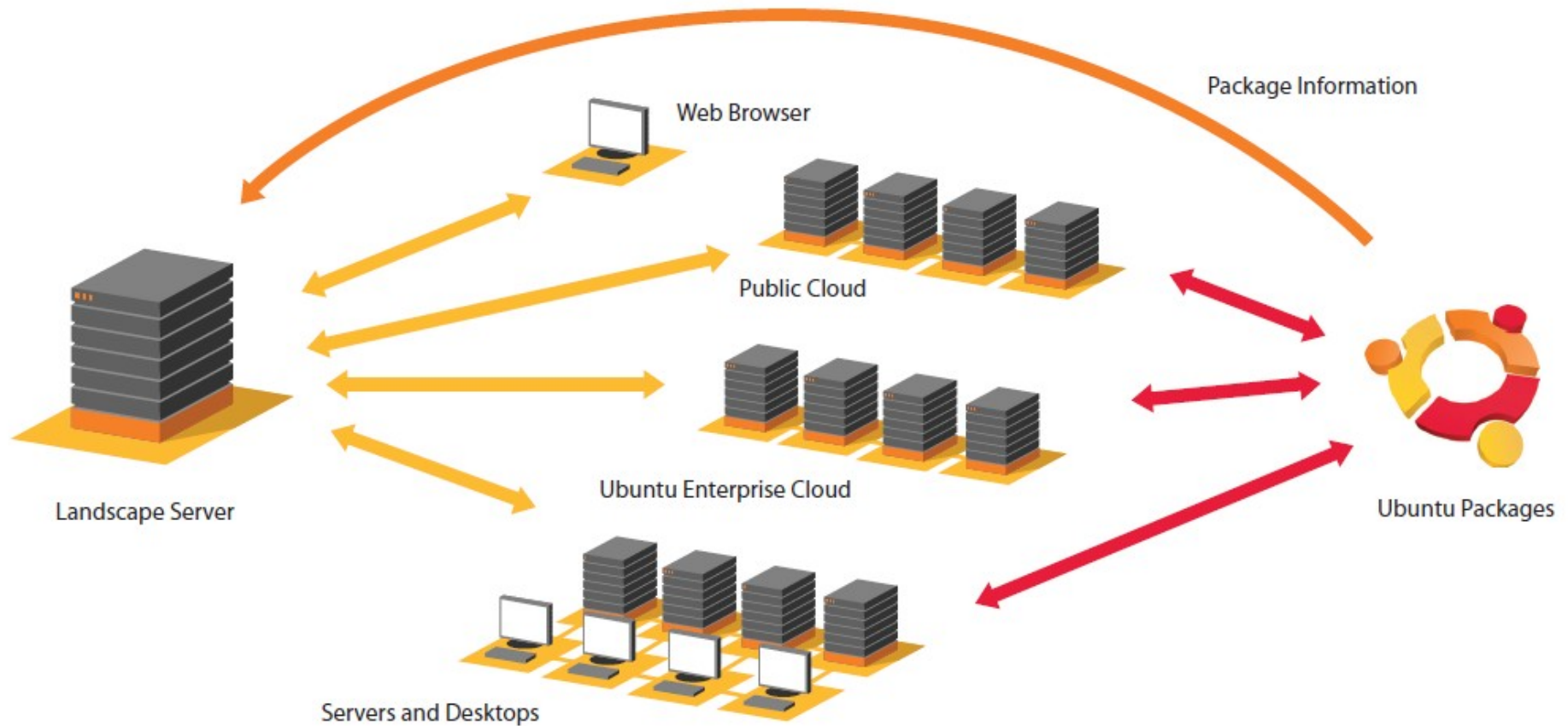


Configuration

- ✓ Replicate systems
- ✓ Manage across development, test and production environments

Landscape

Built-in web-based management



Landscape manages physical, virtual or Cloud based systems

Two Landscape Editions

- **Landscape Hosted Edition**

- Offered as SaaS by Canonical for over 2 years
- No hardware to install or maintain

- **Landscape Dedicated Server**

- System management *without* access to public Internet
- On-site version of Landscape with the Same capabilities as hosted (SaaS) service
- Manage Ubuntu in Amazon EC2 and Private Clouds and physical systems from same console
- Ensures privacy and fast response

What's new in Landscape 1.5

- **Enterprise Authentication**

LDAP and AD integrates with enterprise SSO systems

- **Mass Client Registration**

Automated registration of new systems to Landscape

- **Simple Configuration – Package Profiles**

Define a set of packages that defines a configuration (e.g. Web sever)

or clone a system

- **Package Pinning**

Protect applications from being updated so they continue working

What's new in Landscape 1.5

- **LTS to LTS upgrade**

Automatically upgrade from 8.04 to 10.04 LTS

- **UI Scaling** for large installations

Improved the UI to simplify management of 1000's of systems

- **Cloud Topology View**

View private cloud topology in Landscape

Enterprise Authentication – SSO

Landscape now supports PAM – Pluggable Authentication Modules – requires support only to the PAM interface

Ships with support for LDAP and AD

Users can configure to support their preferred SSO mechanism for signing into Landscape.

This feature is available only with the Landscape Dedicated Server

Mass Client Registration

Users can mass register 1000s of clients automatically (without having to manually accept them) or register a client from the client.

- 1) deliver landscape-client to the machine
- 2) run landscape-config with all the information it needs so it's not interactive
- 3) getting rid of the registration acceptance step in the Landscape web interface

Set a password by logging into Landscape at this url:

<https://<youservername>/account/standalone>

Click on "edit" and set a registration password

`landscape-config -P <password> ...other options...`

Now when clients ping the server they will auto register

This feature is available only with the Landscape Dedicated Server.

Details: <https://help.landscape.canonical.com/MassClientRegistration>

Demonstration

Case Study – Electronic Signage

Landscape Hosted Edition



Context Media

- 800 Video kiosks running Ubuntu in hospital waiting rooms across US serving Ads
- Slim profit margins, 1 service call by human can cause a site to lose money
 - Currently 25 – 30 visits / month by humans
- Industry consists of >200k units
 - 2nd user w/ 2,000 kiosks
- LS saves money by eliminating costly service calls thru remote management

Case Study – ISP

Landscape Dedicated Server



Plusserver

- Largest ISP in Germany supporting both hosted and managed servers
- Operates Ubuntu and Debian
 - Deploys landscape on ~200 servers
- LS saves money by automating routine tasks making system administrators more efficient
- More secure environment – all systems are updated to the latest patch level which minimizes the chance of downtime due to external threats

Case Study – University Desktops

Landscape Dedicated Server



Groningen University, Netherlands

- Technical University in Netherlands
- Standardized on Ubuntu desktops for 7000 terminals across all departments
- LS saves money by automating routine tasks making system administrators more efficient
- Allows IT to centrally update systems to one standard minimizing maintenance costs

Canonical Landscape

Simplify the Management and Monitoring of your Ubuntu systems

Automate Routine Tasks

- Reduce errors associated with patching, routine system maintenance, matching, and compliance

Easy to use Web interface

- Intuitive interface - your staff can learn to use Landscape quickly so they can become more productive.

Manage all your systems from anywhere

- Cloud, physical and virtual systems - respond to system issues *before* they become a problem

Access to Landscape

- Access to Landscape Hosted Edition is provided with any support subscription from Ubuntu
- Landscape Dedicated Server is an additional subscription
- Register all machines (desktop, server and Cloud)
- Free 60 day trial
- Register on <https://forms.canonical.com/landscapetrial/>

Landscape Systems Management 1.5 Release

Ken Drachnik

ken.drachnik@canonical.com